



MAKE YOUR MARK.

READY TO BUILD YOUR BUSINESS IN A PLACE WHERE YOU CAN SHINE?
DISCOVER WHAT'S POSSIBLE IN THE ALEXANDRIA AREA.

WELCOME to *Minnesota's* RECREATION DESTINATION

With pristine lakes, endless forests, and year-round fun, the Alexandria area has everything you've been looking for. We've got award-winning healthcare, nationally acclaimed schools, and all the conveniences of a larger town.

Plus nonstop fun, right out
your back door.



**110 MILES
OF TRAILS**

**DOZENS
OF RESORTS**

**HUNDREDS
OF MILES
OF SHORELINE**

**FIVE
ART CENTERS**



23 PARKS

**HUNTING,
FISHING,
LAKE LIFE,
& FUN**



**350
LAKES!**

WISH YOU WERE HERE. COME JOIN US!

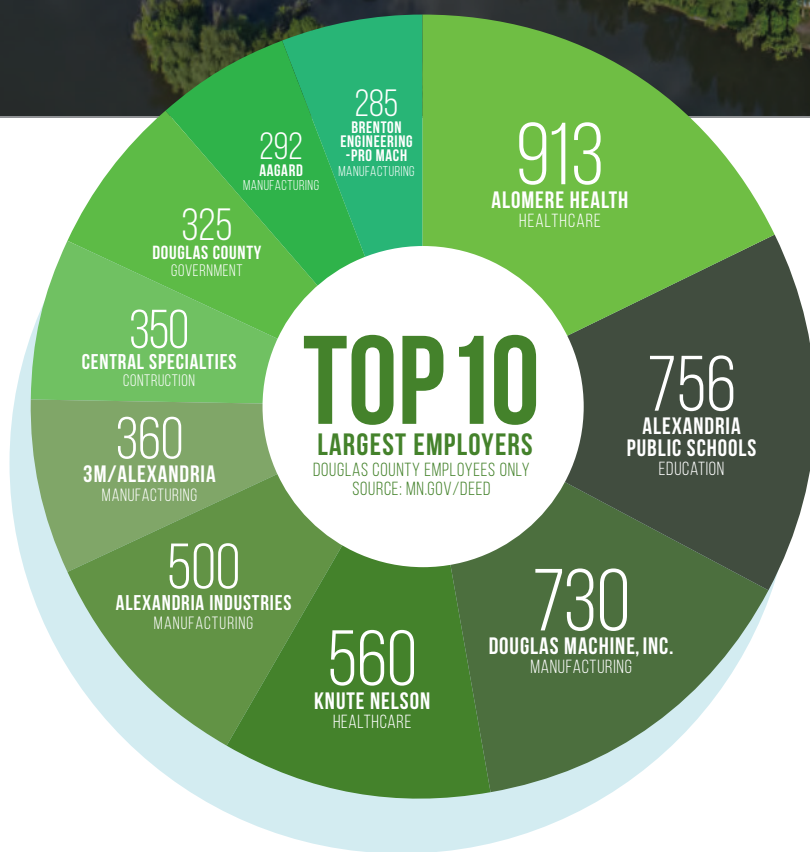
GROW YOUR BUSINESS WITH US.

“We’re able to hire better employees in Alexandria.
And we have more community support.”

SAMUEL HERZOG

FERGUS FALLS TRANSPLANT AND DEVELOPER
WITH UNIQUE OPPORTUNITIES, LLC

BUSINESS LANDSCAPE



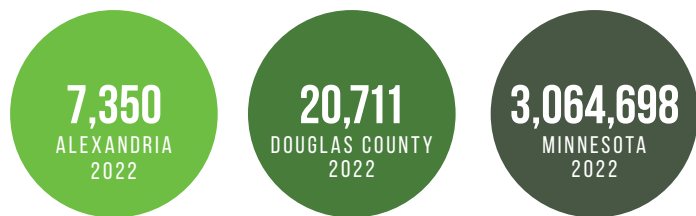
INDUSTRY CHARACTERISTICS

Industry	2022 Jobs	2022 Earnings Per Worker
Manufacturing	3,863	\$77,532
Government	3,508	\$57,772
Health Care & Social Assistance	3,250	\$60,684
Retail Trade	2,597	\$34,112
Accommodation & Food Service	1,888	\$20,696
Educational Services	1,457	\$47,060
Construction	1,224	\$63,804
Wholesale Trade	1,034	\$68,224
Other Services (except Public Administration)	773	\$30,680
Finance & Insurance	598	\$100,932
Administrative, Support, Waste Management & Remediation Services	551	\$31,408
Professional, Scientific & Technical Services	423	\$61,620
Transportation & Warehousing	297	\$60,424
Arts, Entertainment & Recreation	289	\$20,748
Information	263	\$63,232
Real Estate, Rental & Leasing	161	\$58,084
Agriculture, Forestry, Fishing & Hunting	105	\$37,960
Utilities	88	\$102,908

SOURCE: DEED Labor Market

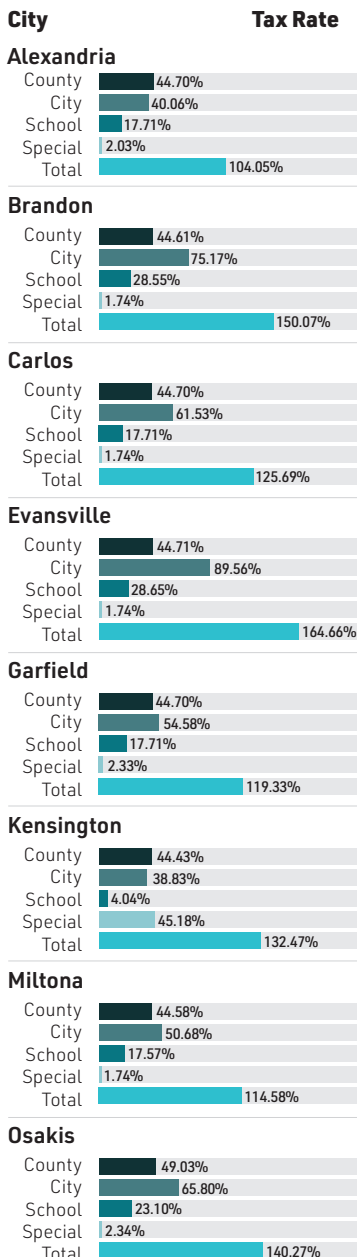
WORKFORCE

SOURCE: DEED MN Unemployment Stats



ECONOMIC INDICATORS

CITY TAX RATES



SOURCE: Douglas County

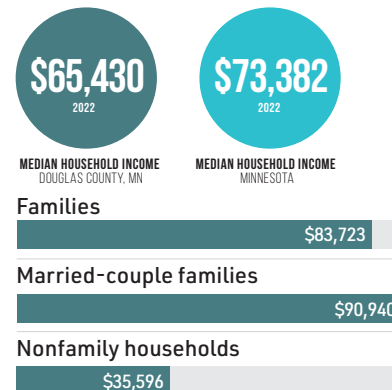
INDUSTRY WEEKLY WAGES

Industry	Wages / per Week 2022
Financial Services	\$1,766
Manufacturing	\$1,491
Construction	\$1,227
Information	\$1,216
Education & Health Services	\$1,086
Public Administration	\$1,055
Transportation	\$891
Professional Services	\$857
Natural Resources	\$807
Other	\$590
Hospitality	\$398

SOURCE: DEED Labor Market

INCOME & EARNINGS

Median Income by Types of Families In Douglas County, Minnesota



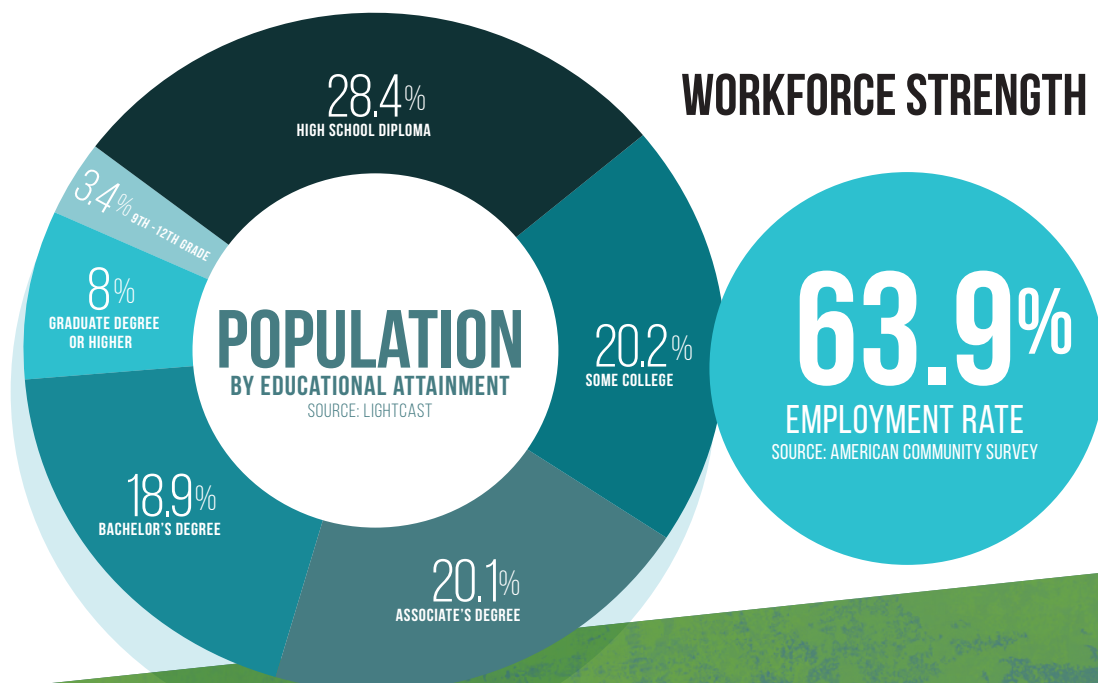
SOURCE: data.census.gov

LENDING ENVIRONMENT

Institution	2021 Deposits	2022 Deposits	2021-22 Difference
American National Bank	\$22,984,000	\$28,137,000	22%
Bell Bank	\$237,969,000	\$214,415,000	-10%
Bremer Bank NA	\$425,146,000	\$448,662,000	6%
First Security Bank of Evansville	\$21,205,000	\$20,075,000	-5%
First Western Bank & Trust	\$116,538,000	\$122,534,000	5%
Gate City Bank	\$27,175,000	\$32,305,000	19%
Glenwood State Bank	\$134,596,000	\$158,050,000	17%
Hometown Community Bank	\$16,604,000	\$12,136,000	-27%
Kensington Bank	\$54,352,000	\$58,556,000	8%
Neighborhood National Bank	\$48,439,000	\$52,681,000	9%
The First National Bank of Osakis	\$74,218,000	\$76,995,000	4%
US Bank NA	\$81,108,000	\$79,815,000	-2%
Vantage Bank	\$32,945,000	\$41,846,000	27%
Viking Bank	\$158,401,000	\$165,899,000	5%
Wells Fargo Bank NA	\$141,966,000	\$149,084,000	5%
Total Douglas County Deposits	\$1,617,600,000	\$1,661,190,000	4%

SOURCE: fdic.gov

WORKFORCE STRENGTH



POPULATION

AGES

Population Change by Age Group

In Douglas County, Minnesota

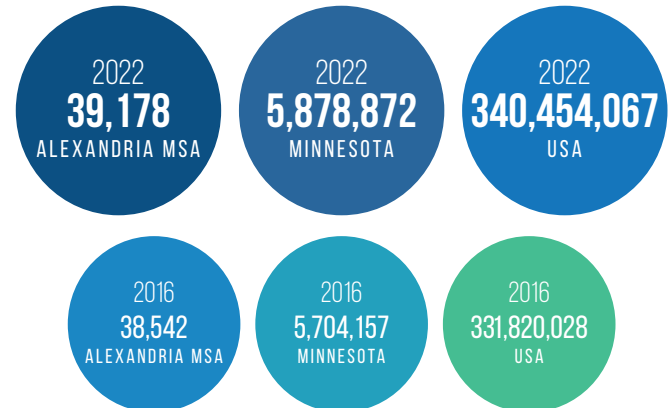
Age Cohort	Population 2016	2021	Difference	% Change
Under 5 years	2,135	2,285	+150	7%
5-9 years	2,231	2,352	+121	5%
10-19 years	4,347	4,580	+233	5%
20-29 years	4,103	3,887	-216	-5%
30-39 years	4,355	4,541	+186	4%
40-49 years	3,926	4,204	+278	7%
50-59 years	5,236	4,566	-670	-13%
60-69 years	5,168	5,869	+701	13%
70 years and over	5,661	6,694	+1,033	18%

SOURCE: Lightcast

GROWTH

Population Growth Comparison

SOURCE: Lightcast



HOUSING OPPORTUNITIES

HOME SALES

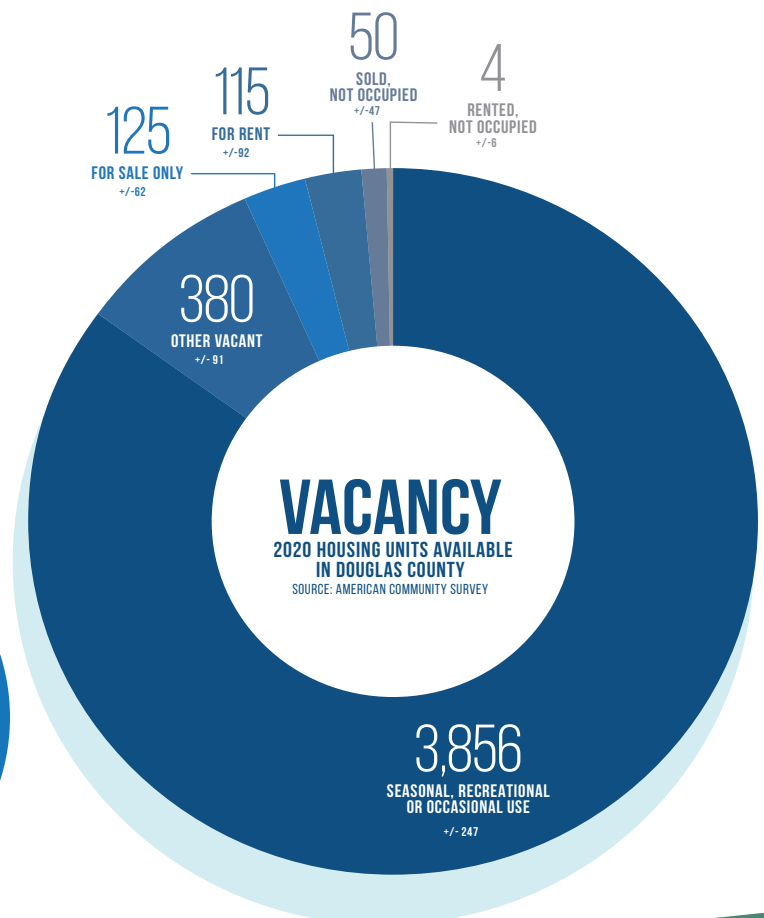
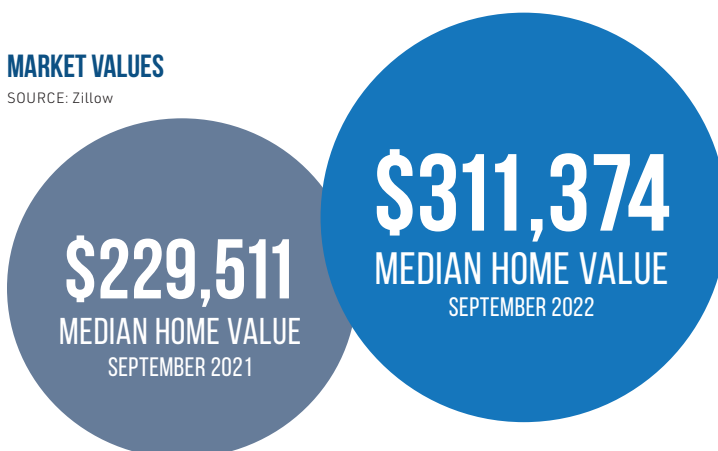
Home Prices and Distribution


> \$1,304,000	0.1%
\$978,001 – \$1,304,000	0.2%
\$625,001 – \$978,000	2.4%
\$521,001 – \$625,000	4.5%
\$391,001 – \$521,000	10.4%
\$261,001 – \$391,000	25.6%
\$130,001 – \$261,000	41.3%
\$65,001 – \$130,000	8.8%
\$0 – \$65,000	6.6%

SOURCE: Neighborhood Scout

MARKET VALUES

SOURCE: Zillow





“That’s one thing we love so much about Alexandria — is just that community feeling. You don’t find it anywhere else in the state of Minnesota.”

KRIS CHISHOLM

CAR CARE PROGRAM

WE’RE HERE TO HELP YOU SUCCEED.

When you’re building a business around here, you’ll find all the support you need at the Alexandria Area Economic Development Commission — for FREE.

CONTACT US FOR FREE SUPPORT WITH:

- Consultation & Site Selection
- Business Startup Coaching
- Business Management Coaching
- Valuable Business Incentives

BRING YOUR DREAMS TO ALEXANDRIA,
AND WATCH THEM THRIVE.



324 BROADWAY STREET
SUITE 101
ALEXANDRIA, MN
320-763-4545
LIVINGALEXAREA.ORG

FOR CONTINUED DEMOGRAPHIC UPDATES VISIT
LIVINGALEXAREA.ORG/DEMOGRAPHICS/